

## July is Group B Strep Awareness Month

### What is Group B Strep?

**Group B streptococcus**, also known as GBS, *Streptococcus agalactiae*, Strep B, and Group B Strep is a bacterial infection. Group B Strep is important for expecting mothers, the elderly and those with compromised immune systems to be aware of.

### What are the affects of GBS?

**In infants**, exposure can lead to hearing, vision, and speech deficiencies. It may also lead to mental retardation, or death in 5 to 15 percent of infants infected.

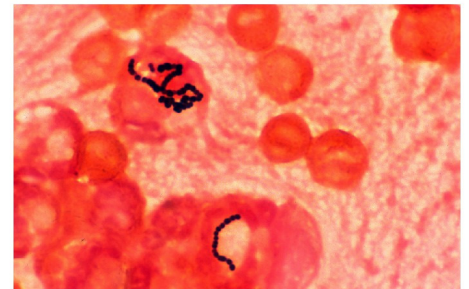
### GBS Facts

**This disease** can be found among many healthy adult females. The bacteria is carried by 10 to 30 percent of pregnant women who have no signs or symptoms.

### Did you know?

An estimated 12,000 infants in the United States will become infected with GBS each year. The bacterial infection results in an estimated death of 2,000 infants annually.

-[www.childbirth.org](http://www.childbirth.org), 2010



### Things You Need to Know

- ❖ **Pre-Natal exams are key to early detection**
  - ❖ **Early detection leads to treatment and prevention of the affects GBS can have on newborns.**
- ❖ **Although many times there are no symptoms, any mother experiencing skin infections, urinary tract infections, or bouts of pneumonia should make their healthcare provider aware of these situations.**
- ❖ **Diabetics are susceptible to infection of this type due to poor circulation and sores.**
- ❖ **Adults with compromised immune systems should also avoid carriers or those already infected with GBS.**



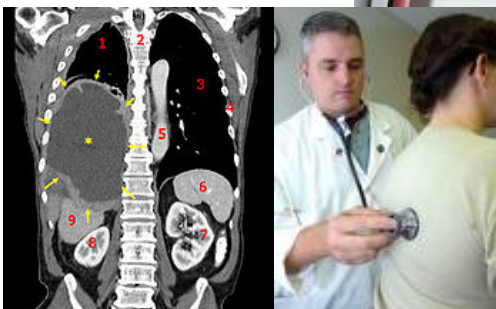
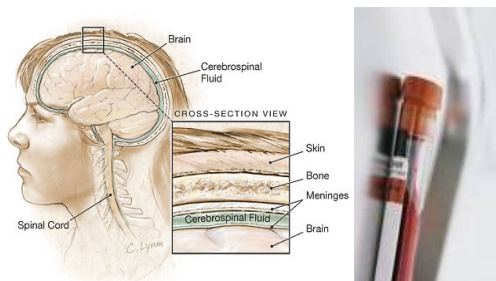
## Group B Strep Awareness

### Tests for GBS

- Blood tests
- Spinal fluid testing

### Treatment options Available

- Prophylactic antibiotics during labor.
- It is also important to have pre-natal exams to discover any potential complications before labor occurs



### Signs & Symptoms

- Early On-set, within a few hours of birth:
  - Lethargy
  - Fever
  - Sepsis
  - Pneumonia
  - Meningitis



This newsletter is a monthly publication of Healthstat Inc., for its clients and their employees. It is for informational purposes only, and is not intended to replace medical advice.

4601 Charlotte Park Drive  
Suite 390  
Charlotte, NC 28217  
(704) 529-6161

Prepared & Reviewed by:  
Jesse Martin,  
Wellness Coordinator  
&

Doug Knoop, MD  
Executive Medical Director

Comments/Questions send to:  
Jesse.Martin@healthstatinc.com

### Additional Information

- Centers for Disease Control:  
[www.cdc.gov/groupbstrep/](http://www.cdc.gov/groupbstrep/)

